

**Specifications**

Nominal Voltage		2 V
Capacity (25°C)	10HR(1.80V)	2400 Ah
	3HR(1.75V)	1836Ah
	1HR(1.75V)	1354Ah
Dimension	Length	490 ± 2mm (19.29inch)
	Width	350 ± 2mm (13.78inch)
	Height	345 ± 2mm (13.58inch)
	Total Height	382 ± 3mm (15.04inch)
Approx. Weight		138kg (304.4lbs) ± 3%
Terminal type		T10
Internal resistance (Fully charged, 25°C)		Approx. 0.15m Ω
Capacity affected by temperature (10HR)	40°C	102%
	25°C	100%
	0°C	85%
	-15°C	65%
Self-discharge (25°C)	3 month	Remaining Capacity: 91%
	6 month	Remaining Capacity: 82%
	12 month	Remaining Capacity: 65%
Nominal operating temperature		25°C ± 3°C (77°F ± 5°F)
Operating temperature range	Discharge	-15°C ~ 50°C (5°F ~ 122°F)
	Charge	-10°C ~ 50°C (14°F ~ 122°F)
	Storage	-20°C ~ 50°C (-4°F ~ 122°F)
Float charging voltage(25°C)		2.25 to 2.30V Temperature compensation: -3mV/°C
Cyclic charging voltage(25°C)		2.42 to 2.48V Temperature compensation: -5mV/°C
Maximum charging current		400A
Terminal material		Copper
Maximum discharge current		12000A(5 sec.)
Designed floating life(20°C)		20 years

- ◆ Absorbent glass mat technology;
- ◆ Recognized by UL & CE;
- ◆ ABS container.

**Constant Current Discharge Characteristics (A, 25°C)**

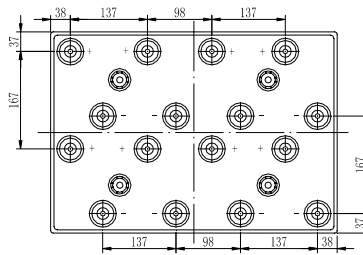
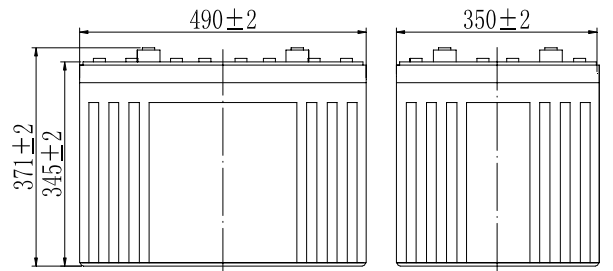
F.V/TIME	30min	60min	2h	3h	4h	5h	6h	8h	10h	20h	24h
1.60V	2160	1440	877	624	502	436	375	294	244	128	111
1.65V	2117	1418	872	621	499	433	372	292	244	128	111
1.70V	2052	1382	864	616	495	430	370	290	243	128	111
1.75V	2002	1355	851	612	492	427	367	288	242	127	110
1.80V	1929	1313	829	594	477	414	356	279	240	126	109

**Constant Power Discharge Characteristics (Watt, 25°C)**

F.V/TIME	30min	60min	2h	3h	4h	5h	6h	8h	10h	20h	24h
1.60V	4039	2736	1693	1224	984	858	738	585	486	257	223
1.65V	3958	2695	1683	1216	978	853	734	581	485	256	223
1.70V	3837	2627	1668	1208	971	847	728	577	484	255	222
1.75V	3744	2575	1643	1200	964	842	723	573	481	254	221
1.80V	3607	2495	1601	1164	935	816	702	556	478	252	219

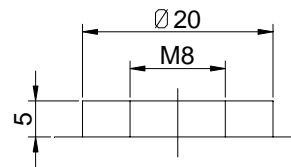
Note: The above characteristics data can be obtained within three charge/discharge cycles.

**Dimensions**



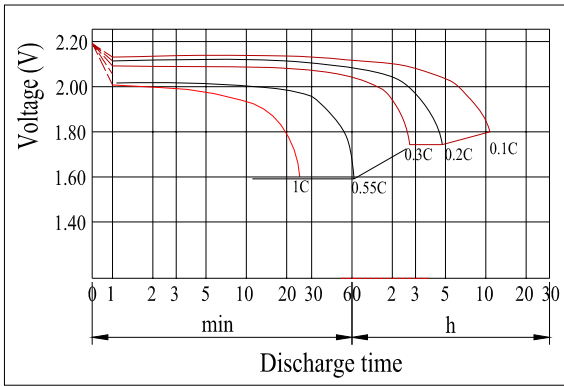
Total Height: 382 (include top cover)

**Terminal**

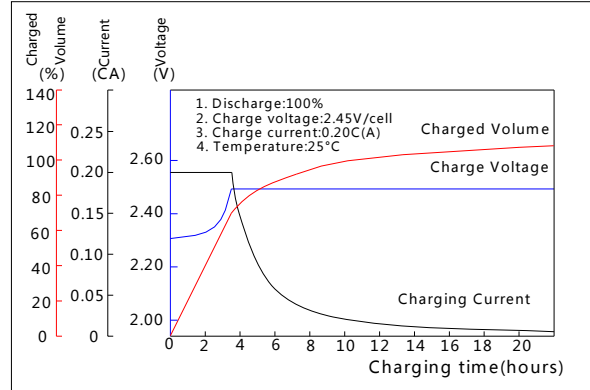


Terminal T10

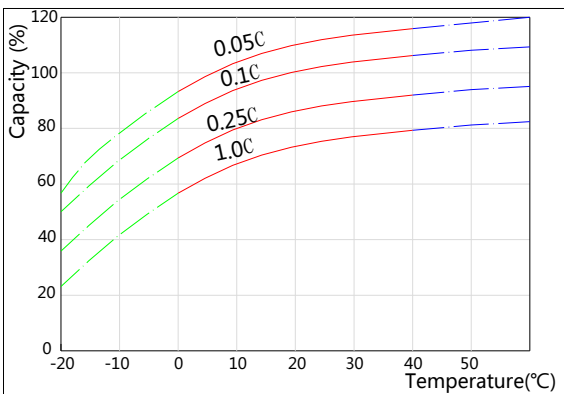
**Discharge Characteristics(25°C)**



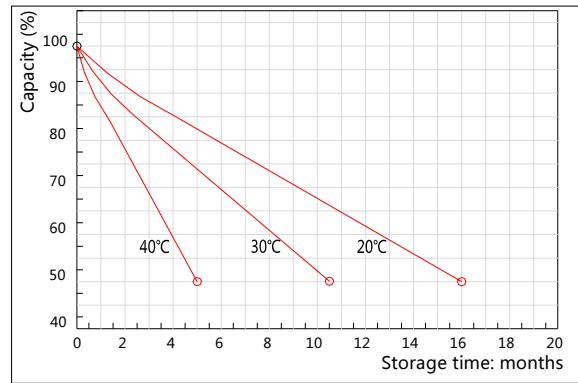
**Charging Characteristics(25°C)**



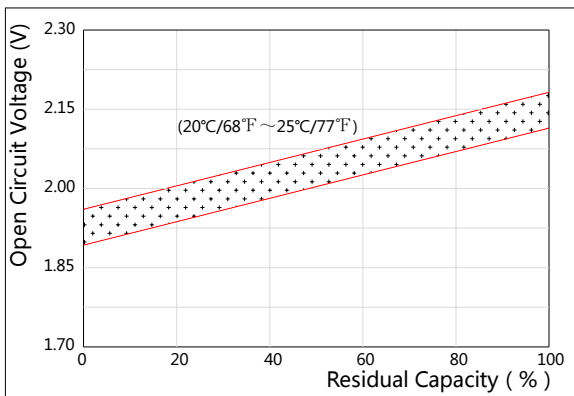
**Effect of Temperature on Capacity**



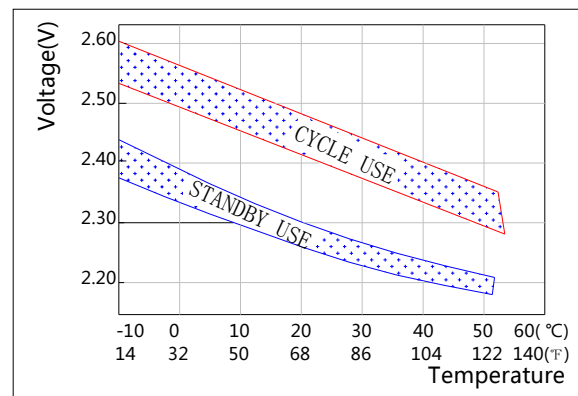
**Self-discharge Characteristics**



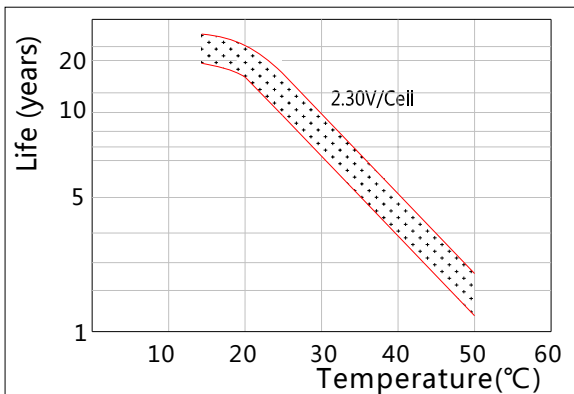
**The Relationship for Open Circuit Voltage and Residual Capacity (25°C)**



**The Relationship for Charging Voltage and Temperature**



**Floating Life on Temperature**



**Cycle Life on D.O.D(25°C)**

