

Specifications

| | | |
|---|--|-----------------------------|
| Nominal Voltage | | 2 V |
| Capacity (25°C) | 10HR(1.80V) | 250 Ah |
| | 3HR(1.75V) | 191Ah |
| | 1HR(1.75V) | 141Ah |
| Dimension | Length | 173±2mm (6.81inch) |
| | Width | 111±2mm (4.37inch) |
| | Height | 330±2mm (12.99inch) |
| | Total Height | 364±2mm (14.33inch) |
| Approx. Weight | | 14.5kg (32.0lbs)±4% |
| Terminal type | | T10 |
| Internal resistance (Fully charged, 25°C) | | Approx. 0.75mΩ |
| Capacity affected by temperature (10HR) | 40°C | 102% |
| | 25°C | 100% |
| | 0°C | 85% |
| | -15°C | 65% |
| Self-discharge (25°C) | 3 month | Remaining Capacity: 91% |
| | 6 month | Remaining Capacity: 82% |
| | 12 month | Remaining Capacity: 65% |
| Nominal operating temperature | | 25°C ± 3°C (77°F ± 5°F) |
| Operating temperature range | Discharge | -15°C ~ 50°C (5°F ~ 122°F) |
| | Charge | -10°C ~ 50°C (14°F ~ 122°F) |
| | Storage | -20°C ~ 50°C (-4°F ~ 122°F) |
| Float charging voltage(25°C) | 2.25 to 2.30V Temperature compensation: -3mV/°C | |
| Cyclic charging voltage(25°C) | 2.42 to 2.48V Temperature compensation: -5mV/°C | |
| Maximum charging current | 50A | |
| Terminal material | Copper | |
| Maximum discharge current | 1700A(5 sec.) | |
| Designed floating life(20°C) | 20 years | |

- ◆ Absorbent glass mat technology;
- ◆ Recognized by UL & CE;
- ◆ ABS container.

Constant Current Discharge Characteristics (A, 25°C)

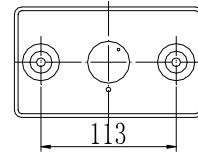
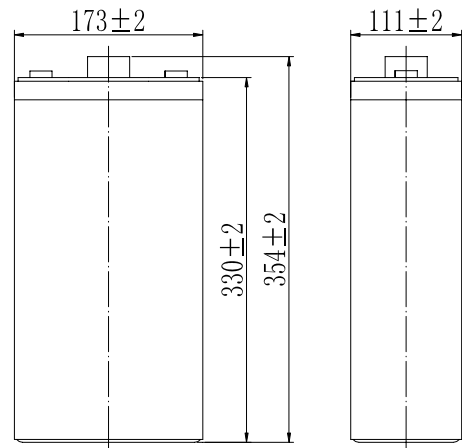
| F.V/TIME | 15min | 30min | 60min | 2h | 3h | 4h | 5h | 6h | 8h | 10h | 20h | 24h |
|----------|-------|-------|-------|------|------|------|------|------|------|------|------|-------|
| 1.60V | 338 | 225 | 150 | 91.4 | 65.0 | 52.3 | 45.4 | 39.0 | 30.6 | 25.5 | 13.4 | 11.58 |
| 1.65V | 329 | 221 | 148 | 90.8 | 64.6 | 52.0 | 45.1 | 38.8 | 30.4 | 25.4 | 13.3 | 11.56 |
| 1.70V | 317 | 214 | 144 | 90.0 | 64.2 | 51.6 | 44.8 | 38.5 | 30.2 | 25.3 | 13.3 | 11.52 |
| 1.75V | 306 | 209 | 141 | 88.7 | 63.8 | 51.3 | 44.5 | 38.3 | 30.0 | 25.2 | 13.2 | 11.45 |
| 1.80V | 290 | 201 | 137 | 86.4 | 61.8 | 49.7 | 43.2 | 37.1 | 29.1 | 25.0 | 13.1 | 11.38 |

Constant Power Discharge Characteristics (Watt, 25°C)

| F.V/TIME | 15min | 30min | 60min | 2h | 3h | 4h | 5h | 6h | 8h | 10h | 20h | 24h |
|----------|-------|-------|-------|-----|-----|------|------|------|------|------|------|------|
| 1.60V | 618 | 421 | 285 | 176 | 127 | 102 | 89.4 | 76.9 | 60.9 | 50.6 | 26.7 | 23.3 |
| 1.65V | 603 | 412 | 281 | 175 | 127 | 102 | 88.9 | 76.4 | 60.5 | 50.5 | 26.7 | 23.2 |
| 1.70V | 581 | 400 | 274 | 174 | 126 | 101 | 88.3 | 75.9 | 60.1 | 50.4 | 26.6 | 23.2 |
| 1.75V | 561 | 390 | 268 | 171 | 125 | 100 | 87.7 | 75.4 | 59.7 | 50.1 | 26.4 | 23.0 |
| 1.80V | 531 | 376 | 260 | 167 | 121 | 97.4 | 85.0 | 73.1 | 57.9 | 49.8 | 26.3 | 22.9 |

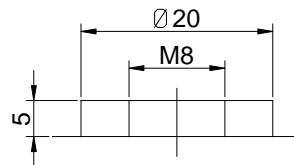
Note: The above characteristics data can be obtained within three charge/discharge cycles.

Dimensions



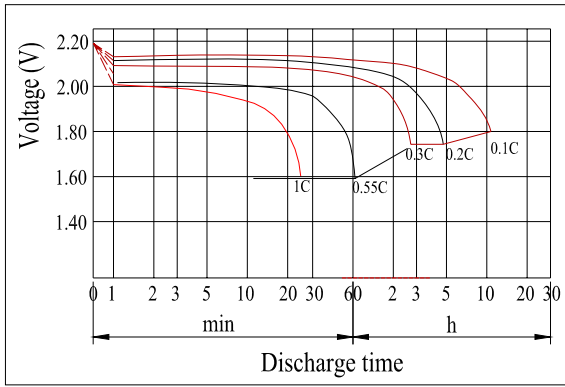
Total Height:364
(Included Top Cover)

Terminal

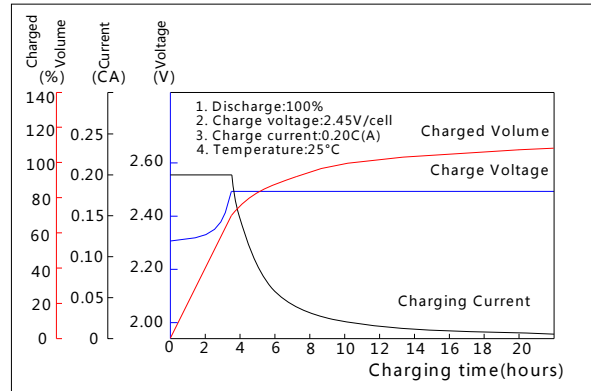


Terminal T10

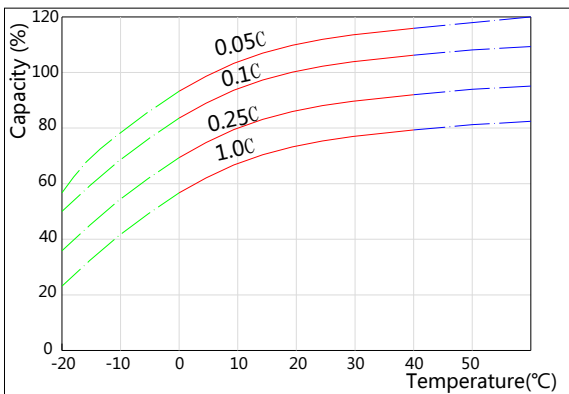
Discharge Characteristics(25°C)



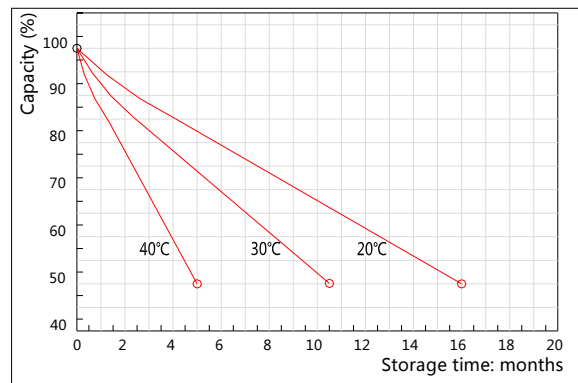
Charging Characteristics(25°C)



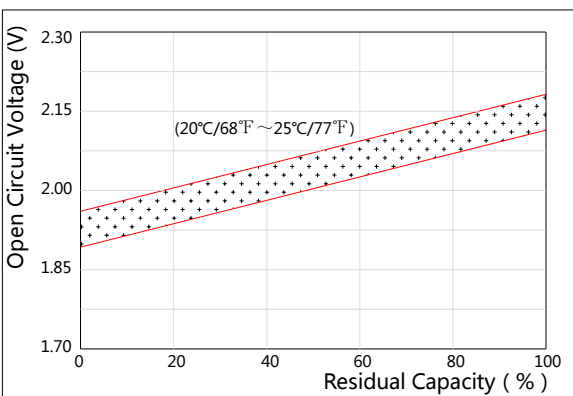
Effect of Temperature on Capacity



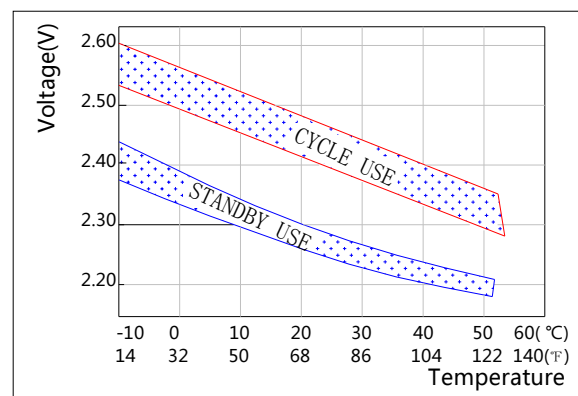
Self-discharge Characteristics



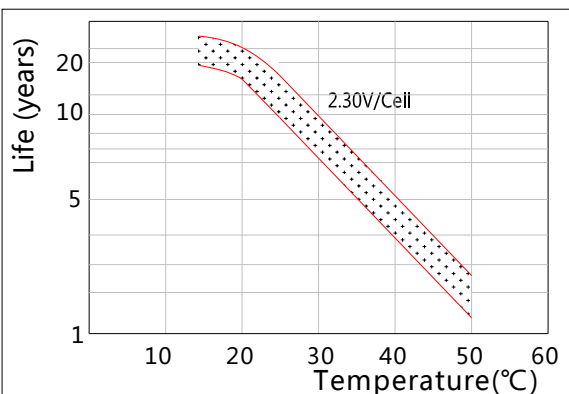
The Relationship for Open Circuit Voltage and Residual Capacity (25°C)



The Relationship for Charging Voltage and Temperature



Floating Life on Temperature



Cycle Life on D.O.D(25°C)

