

Specifications

| | | |
|---|--------------|--|
| Nominal Voltage | | 2 V |
| Capacity (25°C) | 10HR(1.80V) | 300 Ah |
| | 3HR(1.75V) | 229.5Ah |
| | 1HR(1.75V) | 169Ah |
| Dimension | Length | 171 ± 2mm (6.73inch) |
| | Width | 151 ± 2mm (5.94inch) |
| | Height | 330 ± 2mm (12.99inch) |
| | Total Height | 364 ± 2mm (14.33inch) |
| Approx. Weight | | 17.5kg (38.6lbs) ± 4% |
| Terminal type | | T10 |
| Internal resistance (Fully charged, 25°C) | | Approx. 0.75mΩ |
| Capacity affected by temperature (10HR) | 40°C | 102% |
| | 25°C | 100% |
| | 0°C | 85% |
| | -15°C | 65% |
| Self-discharge (25°C) | 3 month | Remaining Capacity: 91% |
| | 6 month | Remaining Capacity: 82% |
| | 12 month | Remaining Capacity: 65% |
| Nominal operating temperature | | 25°C ± 3°C (77°F ± 5°F) |
| Operating temperature range | Discharge | -15°C ~ 50°C (5°F ~ 122°F) |
| | Charge | -10°C ~ 50°C (14°F ~ 122°F) |
| | Storage | -20°C ~ 50°C (-4°F ~ 122°F) |
| Float charging voltage(25°C) | | 2.25 to 2.30V Temperature compensation: -3mV/°C |
| Cyclic charging voltage(25°C) | | 2.42 to 2.48V Temperature compensation: -5mV/°C |
| Maximum charging current | | 60A |
| Terminal material | | Copper |
| Maximum discharge current | | 2000A(5 sec.) |
| Designed floating life(20°C) | | 20 years |

- ◆ Absorbent glass mat technology;
- ◆ Recognized by UL & CE;
- ◆ ABS container.

Constant Current Discharge Characteristics (A, 25°C)

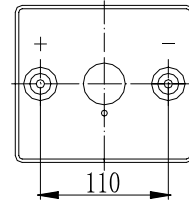
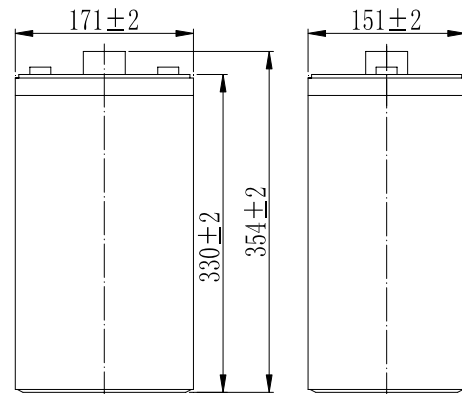
| F.V/TIME | 30min | 60min | 2h | 3h | 4h | 5h | 6h | 8h | 10h | 20h | 24h |
|----------|-------|-------|-----|------|------|------|------|------|------|------|------|
| 1.60V | 270 | 180 | 110 | 78.0 | 62.7 | 54.5 | 46.8 | 36.7 | 30.5 | 16.0 | 13.9 |
| 1.65V | 265 | 177 | 109 | 77.6 | 62.4 | 54.1 | 46.5 | 36.5 | 30.5 | 16.0 | 13.9 |
| 1.70V | 257 | 173 | 108 | 77.0 | 61.9 | 53.8 | 46.2 | 36.3 | 30.4 | 16.0 | 13.8 |
| 1.75V | 250 | 169 | 106 | 76.5 | 61.5 | 53.4 | 45.9 | 36.0 | 30.2 | 15.9 | 13.7 |
| 1.80V | 241 | 164 | 104 | 74.2 | 59.7 | 51.8 | 44.5 | 34.9 | 30.0 | 15.8 | 13.7 |

Constant Power Discharge Characteristics (Watt, 25°C)

| F.V/TIME | 30min | 60min | 2h | 3h | 4h | 5h | 6h | 8h | 10h | 20h | 24h |
|----------|-------|-------|-----|-----|-----|-----|------|------|------|------|------|
| 1.60V | 505 | 342 | 212 | 153 | 123 | 107 | 92.2 | 73.1 | 60.8 | 32.1 | 27.9 |
| 1.65V | 495 | 337 | 210 | 152 | 122 | 107 | 91.7 | 72.6 | 60.7 | 32.0 | 27.9 |
| 1.70V | 480 | 328 | 208 | 151 | 121 | 106 | 91.1 | 72.1 | 60.5 | 31.9 | 27.8 |
| 1.75V | 468 | 322 | 205 | 150 | 121 | 105 | 90.4 | 71.6 | 60.1 | 31.7 | 27.6 |
| 1.80V | 451 | 312 | 200 | 145 | 117 | 102 | 87.7 | 69.5 | 59.7 | 31.5 | 27.4 |

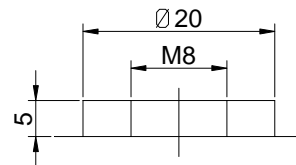
Note: The above characteristics data can be obtained within three charge/discharge cycles.

Dimensions



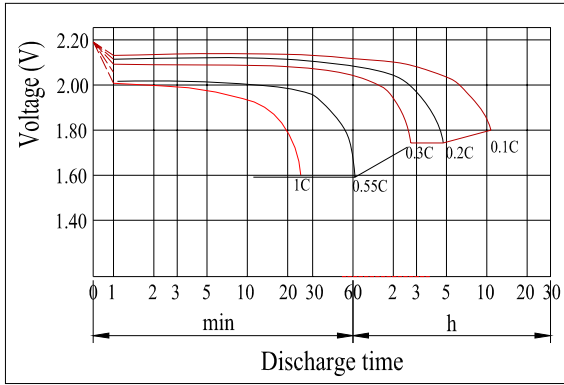
Total Height:364
(Included Top Cover)

Terminal

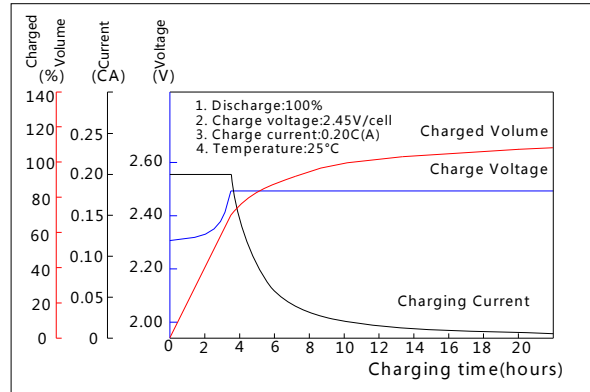


Terminal T10

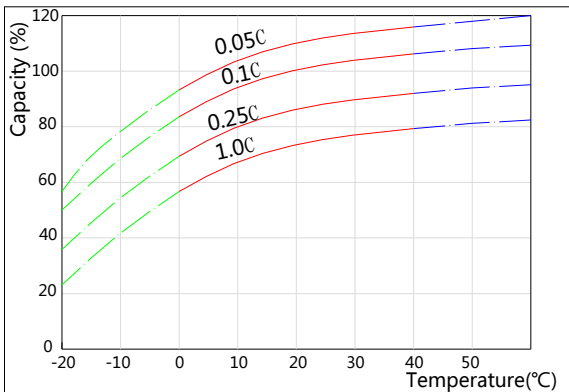
Discharge Characteristics(25°C)



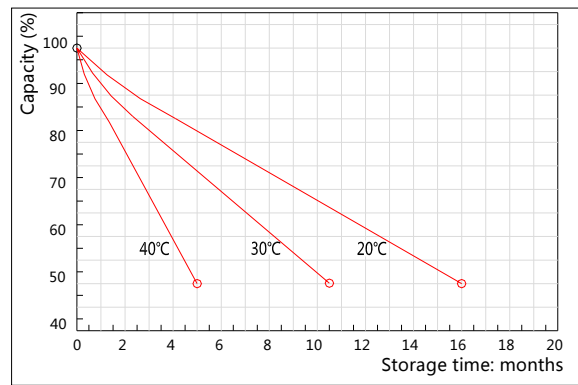
Charging Characteristics(25°C)



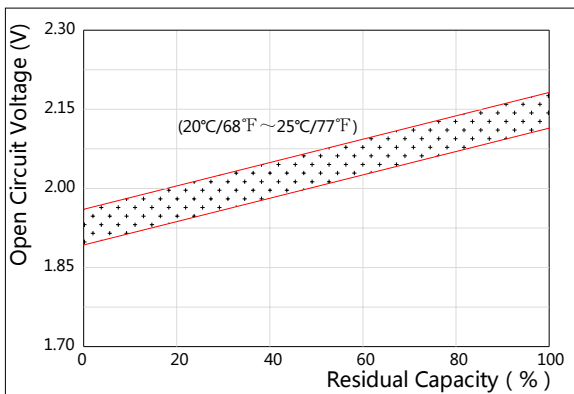
Effect of Temperature on Capacity



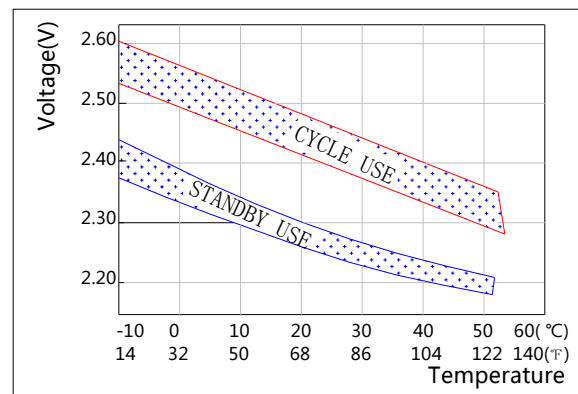
Self-discharge Characteristics



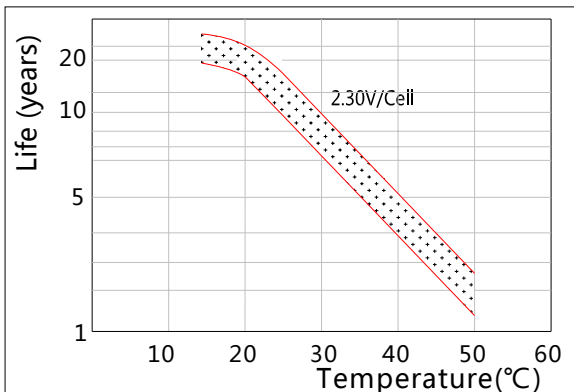
The Relationship for Open Circuit Voltage and Residual Capacity (25°C)



The Relationship for Charging Voltage and Temperature



Floating Life on Temperature



Cycle Life on D.O.D(25°C)

