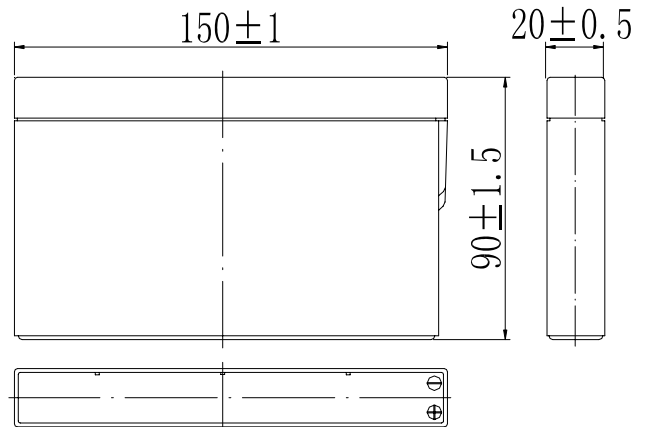


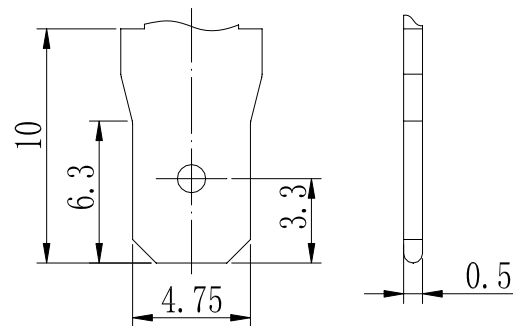
Specifications

| | | |
|---|--------------|---|
| Nominal Voltage | | 12 V |
| Capacity (25°C) | 20HR(10.5V) | 2.0Ah |
| | 10HR(10.5V) | 1.86Ah |
| | 1HR(9.60V) | 1.30Ah |
| Dimension | Length | 150 ± 1mm (5.91inch) |
| | Width | 20 ± 0.5mm (0.79inch) |
| | Height | 90 ± 1.5mm (3.54inch) |
| | Total Height | 90 ± 1.5mm (3.54inch) |
| Approx. Weight | | 0.67kg (1.47lbs) ± 5% |
| Terminal type | | Tab |
| Internal resistance (Fully charged, 25°C) | | Approx. 70mΩ |
| Capacity affected by temperature (20HR) | 40°C | 102% |
| | 25°C | 100% |
| | 0°C | 85% |
| | -15°C | 65% |
| Self-discharge (25°C) | 3 month | Remaining Capacity: 91% |
| | 6 month | Remaining Capacity: 82% |
| | 12 month | Remaining Capacity: 65% |
| Nominal operating temperature | | 25°C ± 3°C (77°F ± 5°F) |
| Operating temperature range | Discharge | -15°C ~ 50°C (5°F ~ 122°F) |
| | Charge | -10°C ~ 50°C (14°F ~ 122°F) |
| | Storage | -20°C ~ 50°C (-4°F ~ 122°F) |
| Float charging voltage(25°C) | | 13.60 to 13.80V Temperature compensation: -18mV/°C |
| Cyclic charging voltage(25°C) | | 14.50 to 14.90V Temperature compensation: -30mV/°C |
| Maximum charging current | | 0.6A |
| Terminal material | | Copper |
| Maximum discharge current | | 30A(5 sec.) |
| Designed floating life(20°C) | | 10years |

Dimensions



Terminal



- ◆ Absorbent glass mat technology;
- ◆ Recognized by UL & CE;
- ◆ ABS container.

Constant Current Discharge Characteristics (A, 25°C)

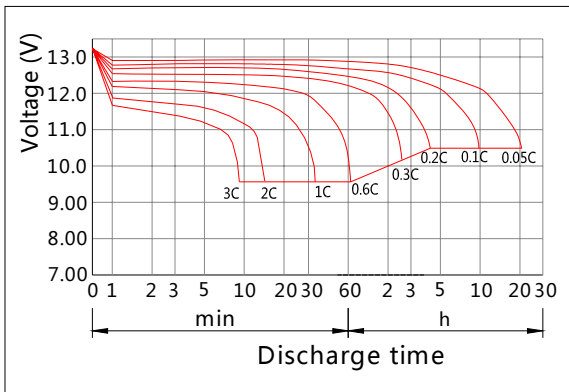
| F.V/TIME | 5min | 10min | 15min | 30min | 60min | 2h | 3h | 4h | 5h | 10h | 20h |
|----------|------|-------|-------|-------|-------|------|------|------|------|-------|-------|
| 9.60V | 7.60 | 4.80 | 3.80 | 2.12 | 1.30 | 0.71 | 0.51 | 0.41 | 0.35 | 0.189 | 0.102 |
| 9.90V | 7.37 | 4.66 | 3.71 | 2.08 | 1.28 | 0.71 | 0.51 | 0.41 | 0.34 | 0.188 | 0.101 |
| 10.2V | 7.07 | 4.46 | 3.57 | 2.01 | 1.25 | 0.70 | 0.50 | 0.40 | 0.34 | 0.187 | 0.101 |
| 10.5V | 6.76 | 4.27 | 3.45 | 1.97 | 1.22 | 0.69 | 0.50 | 0.40 | 0.34 | 0.186 | 0.100 |
| 10.8V | 6.38 | 4.03 | 3.27 | 1.89 | 1.19 | 0.67 | 0.49 | 0.39 | 0.33 | 0.182 | 0.098 |

Constant Power Discharge Characteristics (Watt, 25°C)

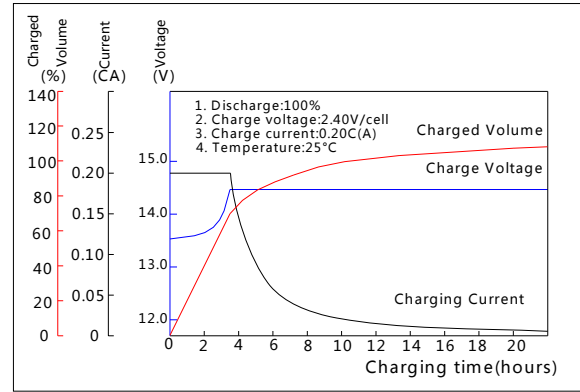
| F.V/TIME | 5min | 10min | 15min | 30min | 60min | 2h | 3h | 4h | 5h | 10h | 20h |
|----------|------|-------|-------|-------|-------|------|------|------|------|------|------|
| 9.60V | 84.8 | 54.1 | 43.3 | 24.3 | 15.1 | 8.31 | 6.06 | 4.86 | 4.14 | 2.27 | 1.22 |
| 9.90V | 82.3 | 52.5 | 42.3 | 23.8 | 14.8 | 8.26 | 6.02 | 4.83 | 4.12 | 2.26 | 1.21 |
| 10.2V | 78.9 | 50.4 | 40.7 | 23.1 | 14.5 | 8.19 | 5.98 | 4.80 | 4.09 | 2.25 | 1.21 |
| 10.5V | 75.5 | 48.2 | 39.3 | 22.5 | 14.2 | 8.07 | 5.94 | 4.76 | 4.06 | 2.23 | 1.20 |
| 10.8V | 71.2 | 45.5 | 37.3 | 21.7 | 13.7 | 7.86 | 5.76 | 4.62 | 3.94 | 2.19 | 1.18 |

Note: The above characteristics data can be obtained within three charge/discharge cycles.

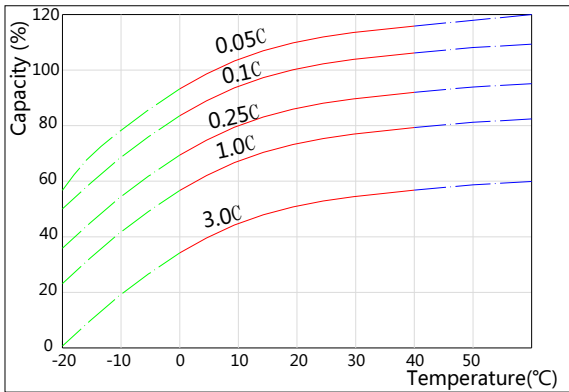
Discharge Characteristics(25°C)



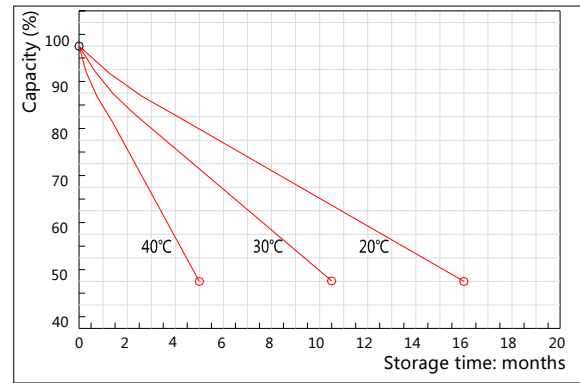
Charging Characteristics(25°C)



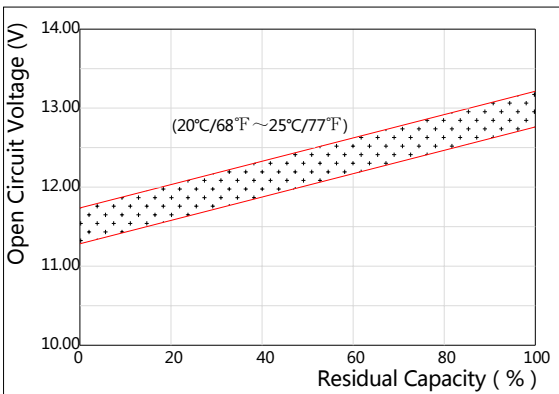
Effect of Temperature on Capacity



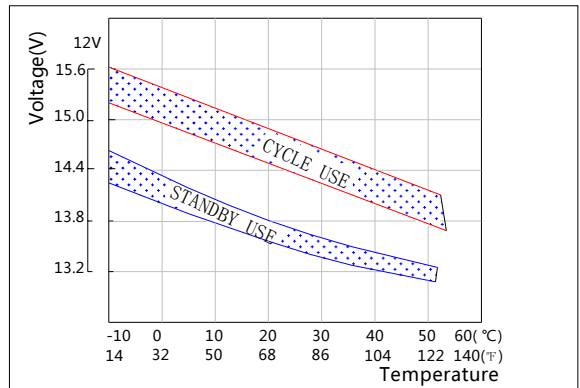
Self-discharge Characteristics



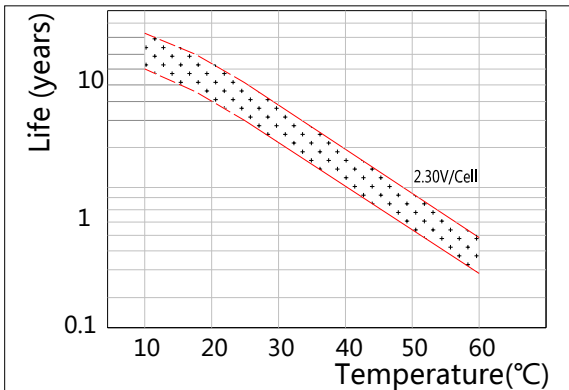
The Relationship for Open Circuit Voltage and Residual Capacity (25°C)



The Relationship for Charging Voltage and Temperature



Floating Life on Temperature



Cycle Life on D.O.D(25°C)

