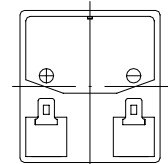
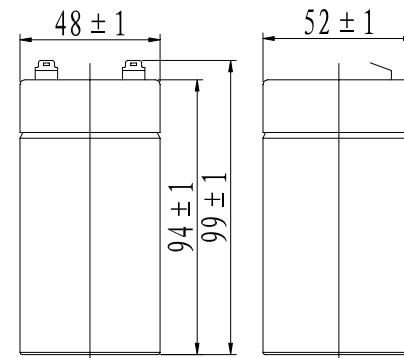


Specifications

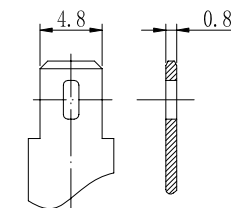
Nominal Voltage		4 V
Capacity (25°C)	20HR(3.50V)	4.5Ah
	10HR(3.50V)	4.2Ah
	1HR(3.20V)	2.93Ah
Dimension	Length	48 ± 1mm (1.89inch)
	Width	52 ± 1mm (2.05inch)
	Height	94 ± 1mm (3.70inch)
	Total Height	99 ± 1mm (3.90inch)
Approx. Weight		0.55kg (1.21lbs) ± 5%
Terminal type		T1
Internal resistance (Fully charged, 25°C)		Approx. 15mΩ
Capacity affected by temperature (20HR)	40°C	102%
	25°C	100%
	0°C	85%
	-15°C	65%
Self-discharge (25°C)	3 month	Remaining Capacity: 91%
	6 month	Remaining Capacity: 82%
	12 month	Remaining Capacity: 65%
Nominal operating temperature		25°C ± 3°C (77°F ± 5°F)
Operating temperature range	Discharge	-15°C ~ 50°C (5°F ~ 122°F)
	Charge	-10°C ~ 50°C (14°F ~ 122°F)
	Storage	-20°C ~ 50°C (-4°F ~ 122°F)
Float charging voltage(25°C)		4.50 to 4.60V Temperature compensation: -6mV/°C
Cyclic charging voltage(25°C)		4.85 to 4.95V Temperature compensation: -10mV/°C
Maximum charging current		1.35A
Terminal material		Copper
Maximum discharge current		67.5A(5 sec.)
Designed floating life(20°C)		10years

- ◆ Absorbent glass mat technology;
- ◆ Recognized by UL & CE;
- ◆ ABS container.

Dimensions



Terminal



Terminal T1

Constant Current Discharge Characteristics (A, 25°C)

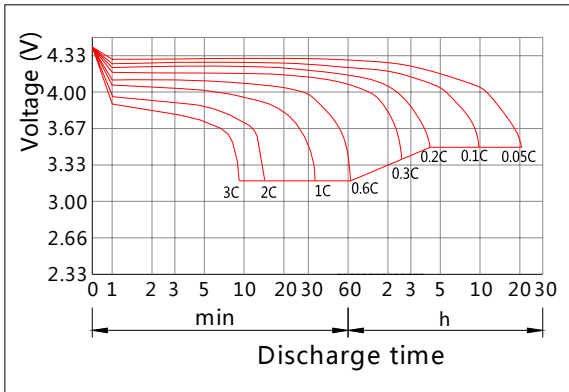
F.V/TIME	5min	10min	15min	30min	60min	2h	3h	4h	5h	10h	20h
3.20V	17.1	10.8	8.55	4.77	2.93	1.60	1.15	0.92	0.78	0.42	0.228
3.30V	16.6	10.5	8.34	4.67	2.88	1.59	1.14	0.91	0.78	0.42	0.227
3.40V	15.9	10.0	8.04	4.53	2.81	1.58	1.13	0.91	0.77	0.42	0.226
3.50V	15.2	9.61	7.76	4.42	2.75	1.55	1.13	0.90	0.77	0.42	0.225
3.60V	14.4	9.07	7.35	4.26	2.67	1.51	1.09	0.87	0.74	0.41	0.221

Constant Power Discharge Characteristics (Watt, 25°C)

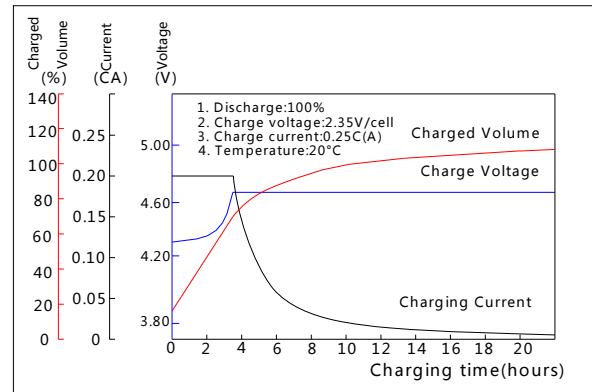
F.V/TIME	5min	10min	15min	30min	60min	2h	3h	4h	5h	10h	20h
3.20V	63.6	40.6	32.5	18.2	11.3	6.23	4.54	3.64	3.11	1.70	0.91
3.30V	61.7	39.4	31.7	17.9	11.1	6.20	4.52	3.62	3.09	1.69	0.91
3.40V	59.2	37.8	30.5	17.3	10.8	6.14	4.49	3.60	3.07	1.68	0.91
3.50V	56.6	36.1	29.5	16.9	10.6	6.05	4.46	3.57	3.04	1.67	0.90
3.60V	53.4	34.1	27.9	16.3	5.15	5.90	4.32	3.47	2.95	1.64	0.88

Note: The above characteristics data can be obtained within three charge/discharge cycles.

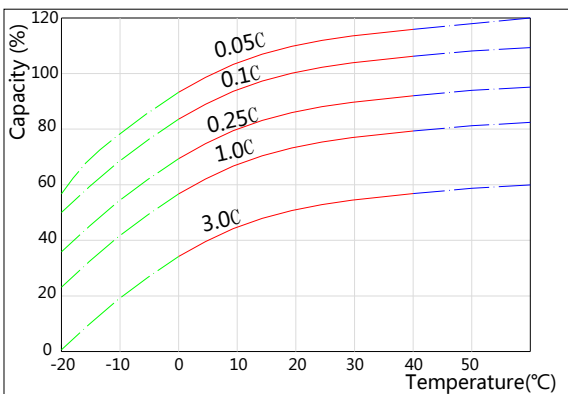
Discharge Characteristics(25°C)



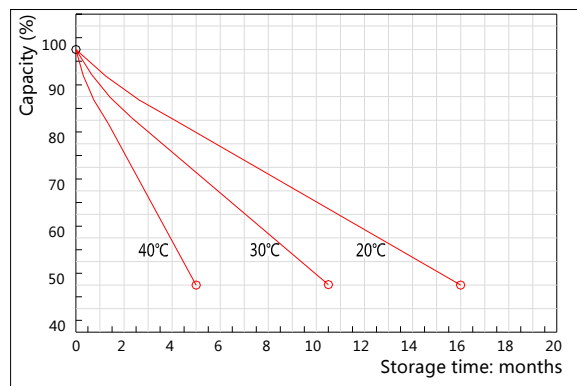
Charging Characteristics(25°C)



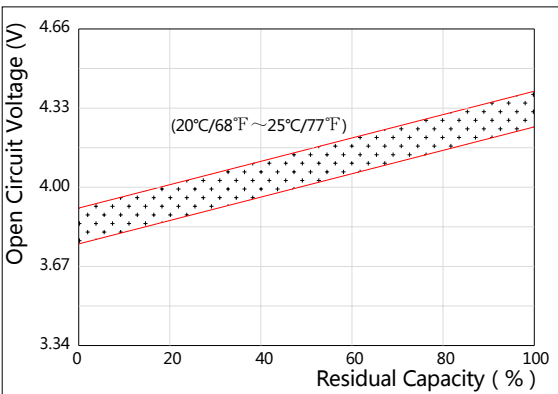
Effect of Temperature on Capacity



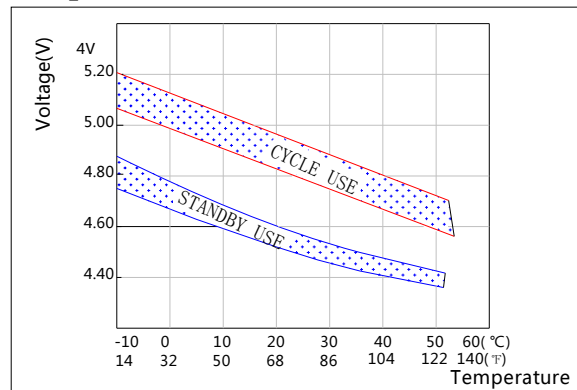
Self-discharge Characteristics



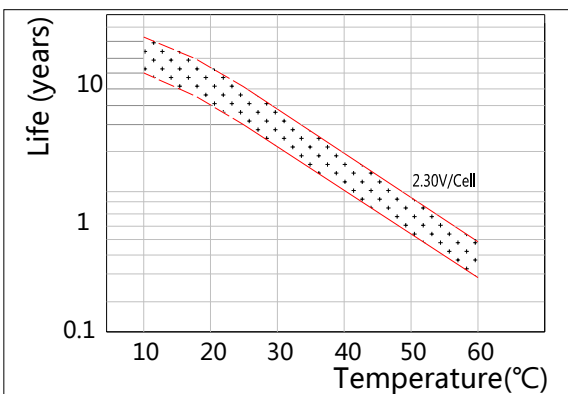
The Relationship for Open Circuit Voltage and Residual Capacity (25°C)



The Relationship for Charging Voltage and Temperature



Floating Life on Temperature



Cycle Life on D.O.D(25°C)

