

**Specifications**

Nominal Voltage		12 V
Capacity (25°C)	10HR(10.8V)	145 Ah
	5HR(10.5V)	127Ah
	1HR(9.60V)	89Ah
Dimension	Length	428.5 ± 2mm (16.87inch)
	Width	177 ± 2mm (6.97inch)
	Height	258 ± 2mm (10.16inch)
	Total Height	258 ± 2mm (10.16inch)
Approx. Weight		44.5kg (98.1lbs) ± 4%
Terminal type		M6 Bolt
Internal resistance (Fully charged, 25°C)		Approx. 5m Ω
Capacity affected by temperature (10HR)	40°C	102%
	25°C	100%
	0°C	85%
	-15°C	65%
Self-discharge (25°C)	3 month	Remaining Capacity: 91%
	6 month	Remaining Capacity: 82%
	12 month	Remaining Capacity: 65%
Nominal operating temperature		25°C ± 3°C (77°F ± 5°F)
Operating temperature range	Discharge	-15°C ~ 50°C (5°F ~ 122°F)
	Charge	-10°C ~ 50°C (14°F ~ 122°F)
	Storage	-20°C ~ 50°C (-4°F ~ 122°F)
Float charging voltage(25°C)		13.50 to 13.80V Temperature compensation: -18mV/°C
Cyclic charging voltage(25°C)		14.50 to 14.90V Temperature compensation: -30mV/°C
Maximum charging current		43.5A
Terminal material		Stainless steel
Maximum discharge current		1000A(5 sec.)
Designed floating life(20°C)		12 years

- ◆ Absorbent glass mat technology;
- ◆ Recognized by UL & CE;
- ◆ ABS container.

**Constant Current Discharge Characteristics (A, 25°C)**

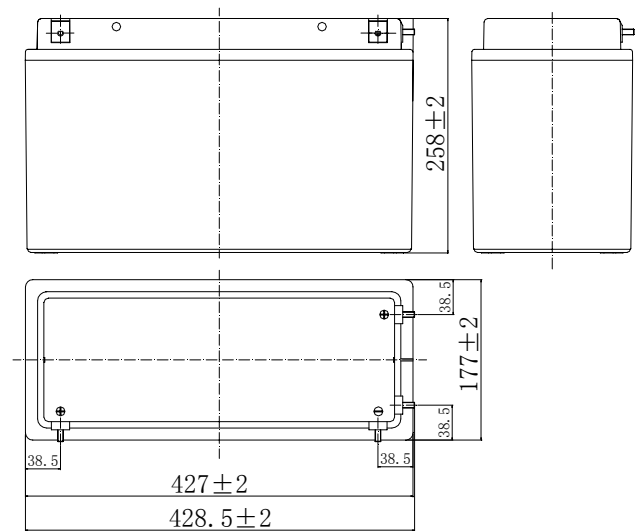
F.V/TIME	15min	30min	60min	2h	3h	4h	5h	6h	8h	10h	20h
9.60V	239	145	89.9	53.0	37.0	30.3	25.9	22.6	17.7	14.8	7.75
9.90V	234	142	88.6	52.7	36.8	30.1	25.7	22.5	17.6	14.7	7.73
10.2V	225	138	86.3	52.2	36.5	29.9	25.6	22.3	17.5	14.7	7.71
10.5V	217	134	84.6	51.4	36.3	29.7	25.4	22.2	17.4	14.6	7.67
10.8V	206	129	82.0	50.1	35.2	28.8	24.6	21.5	16.9	14.5	7.61

**Constant Power Discharge Characteristics (Watt, 25°C)**

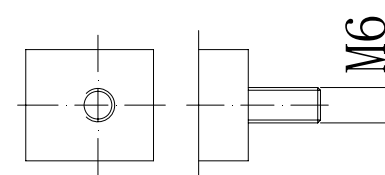
F.V/TIME	15min	30min	60min	2h	3h	4h	5h	6h	8h	10h	20h
9.60V	2627	1627	1025	614	435	357	306	267	211	176	93.0
9.90V	2564	1594	1009	610	432	354	304	266	210	176	92.8
10.2V	2469	1546	984	604	429	352	302	264	208	175	92.5
10.5V	2385	1508	964	595	426	350	300	262	207	174	92.0
10.8V	2259	1453	935	580	414	339	291	254	201	173	91.4

Note: The above characteristics data can be obtained within three charge/discharge cycles.

**Dimensions**

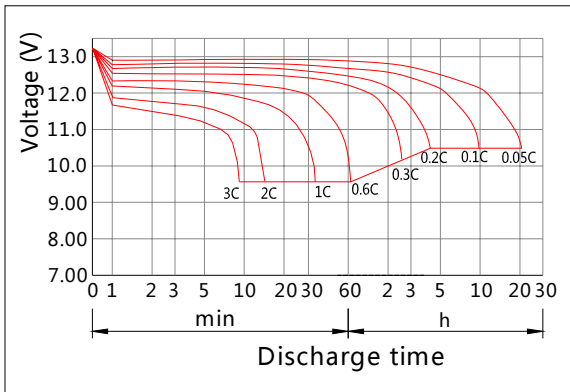


**Terminal**

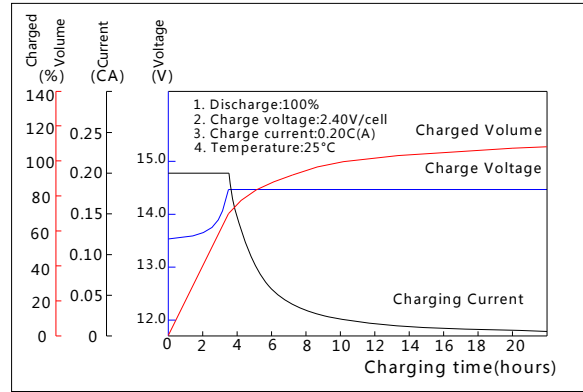


**Terminal**

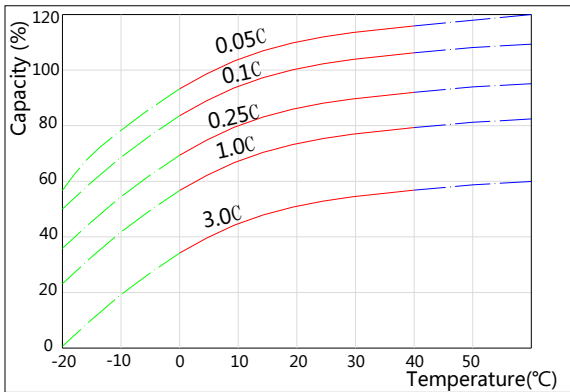
**Discharge Characteristics(25°C)**



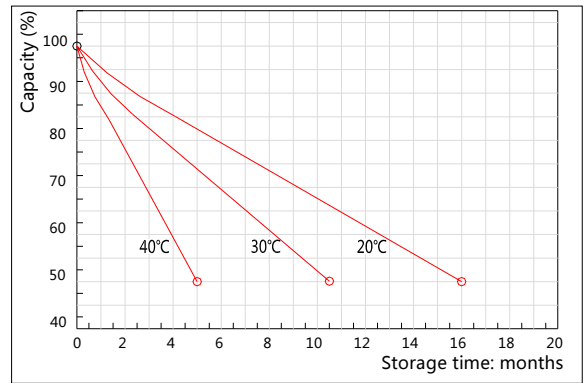
**Charging Characteristics(25°C)**



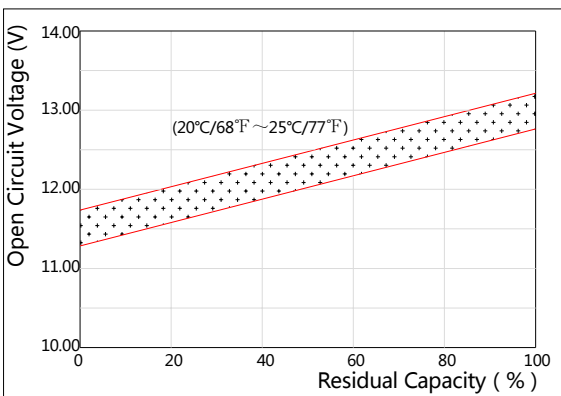
**Effect of Temperature on Capacity**



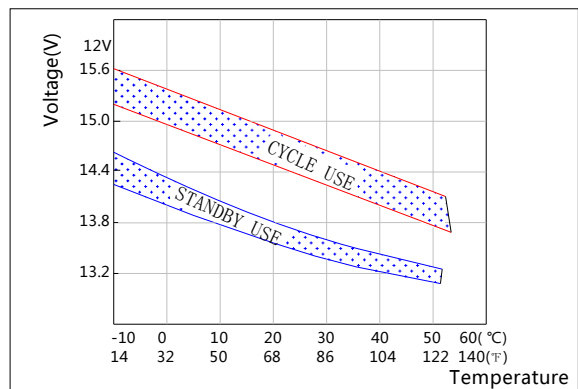
**Self-discharge Characteristics**



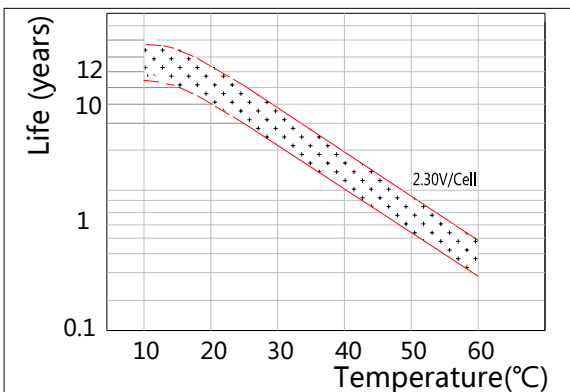
**The Relationship for Open Circuit Voltage and Residual Capacity (25°C)**



**The Relationship for Charging Voltage and Temperature**



**Floating Life on Temperature**



**Cycle Life on D.O.D(25°C)**

