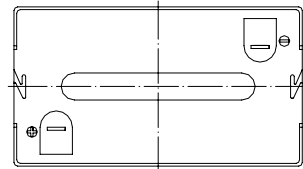
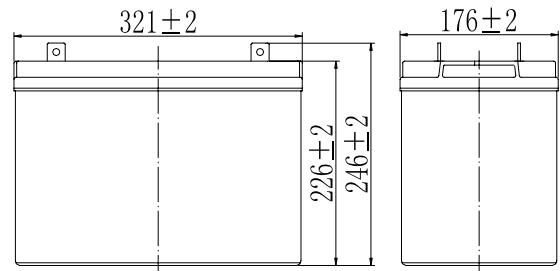


Specifications

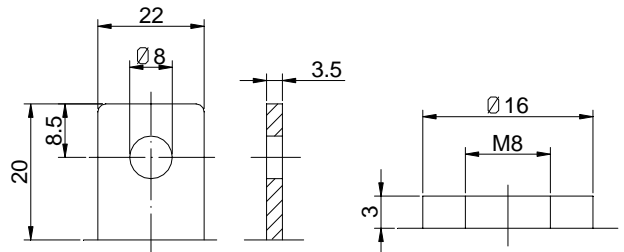
Nominal Voltage		6 V
Capacity (25°C)	10HR(5.40V)	200 Ah
	5HR(5.25V)	175Ah
	1HR(4.80V)	124Ah
Dimension	Length	321 ± 2mm (12.64inch)
	Width	176 ± 2mm (6.93inch)
	Height	226 ± 2mm (8.90inch)
	Total Height	T5: 246 ± 2mm (9.69inch) T11: 229 ± 2mm (9.02inch)
Approx. Weight		30.5kg (67.3lbs) ± 4%
Terminal type		T5/T11
Internal resistance (Fully charged, 25°C)		Approx. 2mΩ
Capacity affected by temperature (10HR)	40°C	102%
	25°C	100%
	0°C	85%
	-15°C	65%
Self-discharge (25°C)	3 month	Remaining Capacity: 91%
	6 month	Remaining Capacity: 82%
	12 month	Remaining Capacity: 65%
Nominal operating temperature		25°C ± 3°C (77°F ± 5°F)
Operating temperature range	Discharge	-15°C ~ 50°C (5°F ~ 122°F)
	Charge	-10°C ~ 50°C (14°F ~ 122°F)
	Storage	-20°C ~ 50°C (-4°F ~ 122°F)
Float charging voltage(25°C)		6.75 to 6.90V Temperature compensation: -9mV/°C
Cyclic charging voltage(25°C)		7.25 to 7.45V Temperature compensation: -15mV/°C
Maximum charging current		60A
Terminal material		Copper
Maximum discharge current		1600A(5 sec.)
Designed floating life(20°C)		12 years



Dimensions



Terminal



Terminal T5

Terminal T11

- ◆ Absorbent glass mat technology;
- ◆ Recognized by UL & CE;
- ◆ ABS container.

Constant Current Discharge Characteristics (A, 25°C)

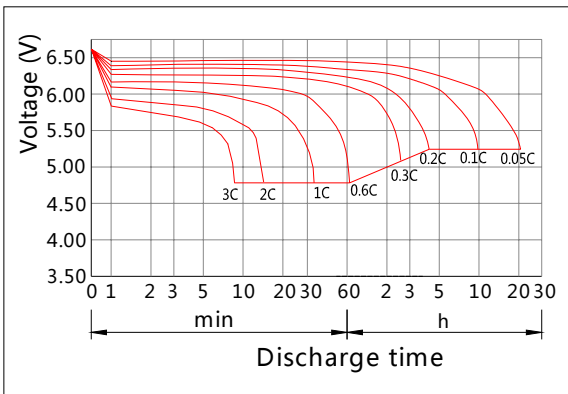
F.V/TIME	15min	30min	60min	2h	3h	4h	5h	6h	8h	10h	20h
4.80V	330	200	124	73.1	51.0	41.8	35.7	31.2	24.5	20.4	10.7
4.95V	322	196	122	72.6	50.7	41.6	35.5	31.0	24.3	20.3	10.7
5.10V	310	190	119	72.0	50.4	41.3	35.2	30.8	24.2	20.3	10.6
5.25V	300	185	117	70.9	50.0	41.0	35.0	30.6	24.0	20.1	10.6
5.40V	284	179	113	69.1	48.5	39.8	34.0	29.7	23.3	20.0	10.5

Constant Power Discharge Characteristics (Watt, 25°C)

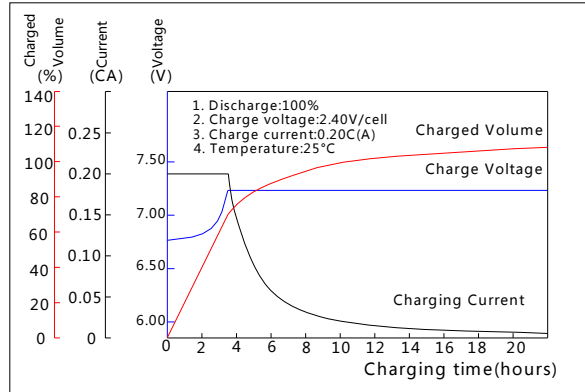
F.V/TIME	15min	30min	60min	2h	3h	4h	5h	6h	8h	10h	20h
4.80V	1812	1122	707	423	300	246	211	184	145	122	64.1
4.95V	1768	1100	696	421	298	244	210	183	145	121	64.0
5.10V	1703	1066	679	417	296	243	208	182	144	121	63.8
5.25V	1645	1040	665	411	294	241	207	181	143	120	63.4
5.40V	1558	1002	645	400	285	234	201	175	138	119	63.0

Note: The above characteristics data can be obtained within three charge/discharge cycles.

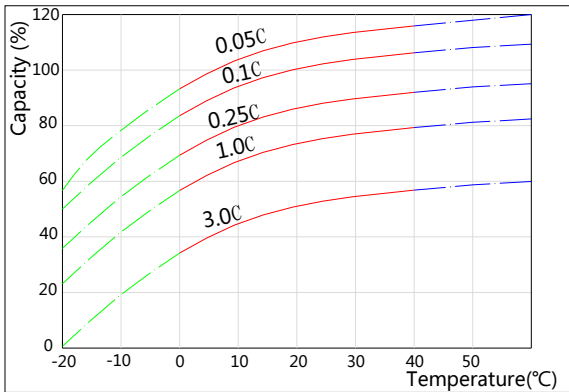
Discharge Characteristics(25°C)



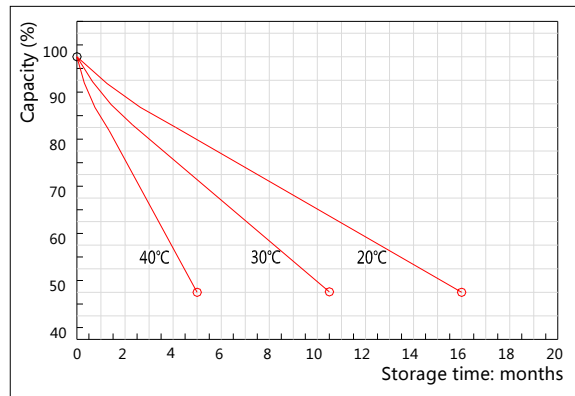
Charging Characteristics(25°C)



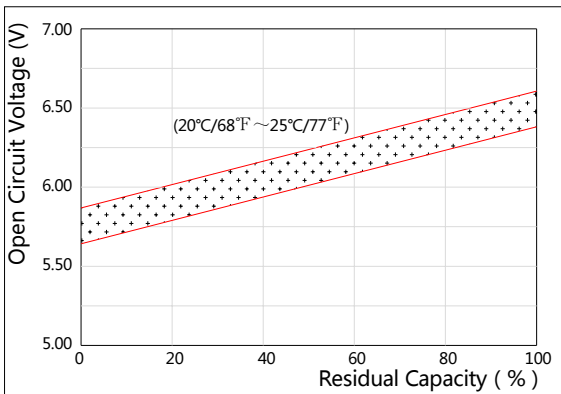
Effect of Temperature on Capacity



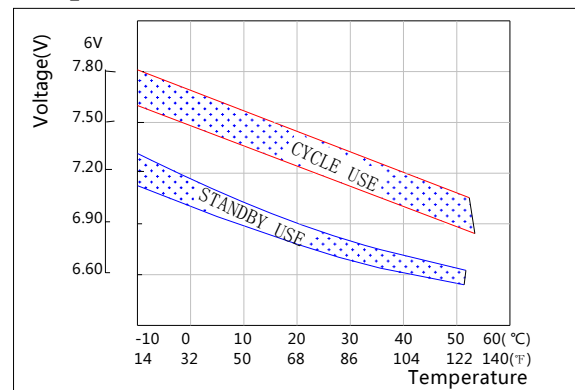
Self-discharge Characteristics



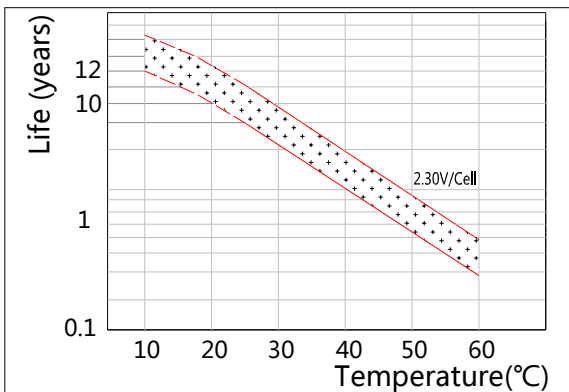
The Relationship for Open Circuit Voltage and Residual Capacity (25°C)



The Relationship for Charging Voltage and Temperature



Floating Life on Temperature



Cycle Life on D.O.D(25°C)

